

WorldCast Horizon

Installation and Quick Start Guide (Digital)

1. Installation

1.1 Preparation

Upon receipt of this unit please check that all included cables, manuals etc are present as per the equipment checklist below.

1.2 Equipment Checklist

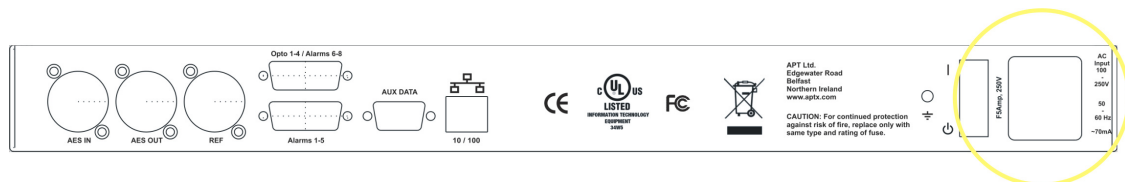
- 1 x Power Adaptor
- 1 x Software CD
- 1 x User Manual

1.3 Placement

The WorldCast Horizon should be securely fixed to an appropriate rack using M6 bolts and protective plastic washers.

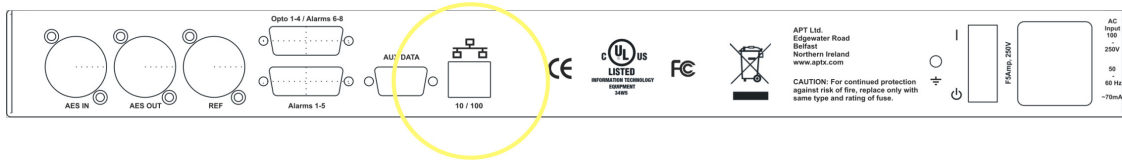
2. Connections

2.1 Power Supply Cable



- Connect the female end of supplied power adaptor cable to the power supply port on the Horizon.
- Connect the male end of the power supply adaptor cable to an appropriate power outlet.
- Do not power the unit on at this time.

2.2 Ethernet Cable



- Connect an RJ45 terminated CAT5 cable between the Ethernet port on the Horizon and an appropriate network port.

2.3 Audio Inputs



- Connect an appropriate audio source to the digital audio input using a male to female balanced XLR cable.

2.4 Audio Outputs



- Connect appropriate audio monitoring equipment to the digital audio output using a female to male balanced XLR cable.

3. Software Installation

- Insert the software CD into a compatible CD/DVD Rom drive and open using Windows Explorer or My Computer.
- Copy the NMS executable file and graphics folder to a suitable location on the PC's hard drive. (*Note - The WorldCast NMS should NOT be executed from the CD*)

4. Configuration and Test

4.1 Power Up

- Switch on the Horizon and allow the boot up sequence to complete.
- Once the boot up sequence is complete, the Horizon will be ready for testing.

4.2 Network Management Startup and Login

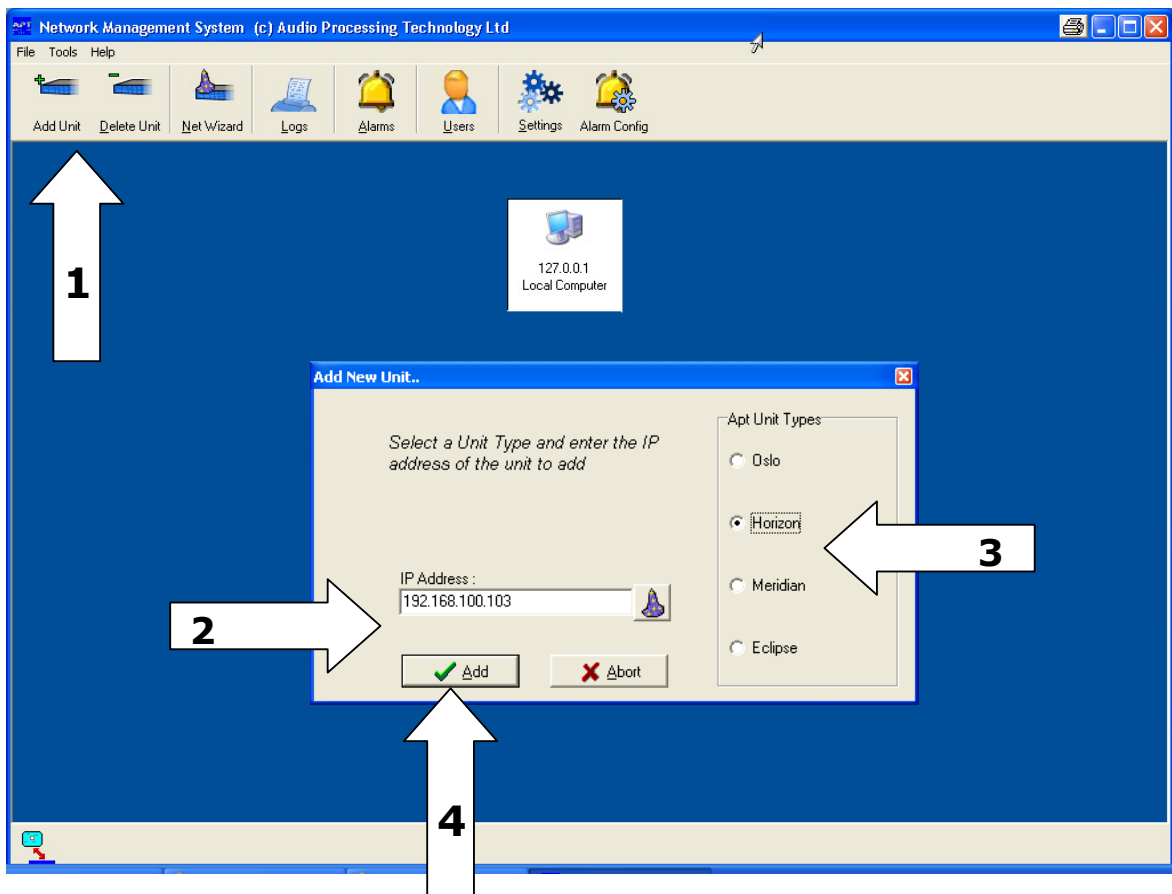
- Start the WorldCast Network Management System by double-clicking the "APT_Generic_Control_System.exe" executable file.
- At the login prompt use the following default login settings:

User Name – "administrator"
Password – "password"

4.3 Adding a Horizon to the Network

Adding a WorldCast Horizon to the Network Management System requires four separate steps:

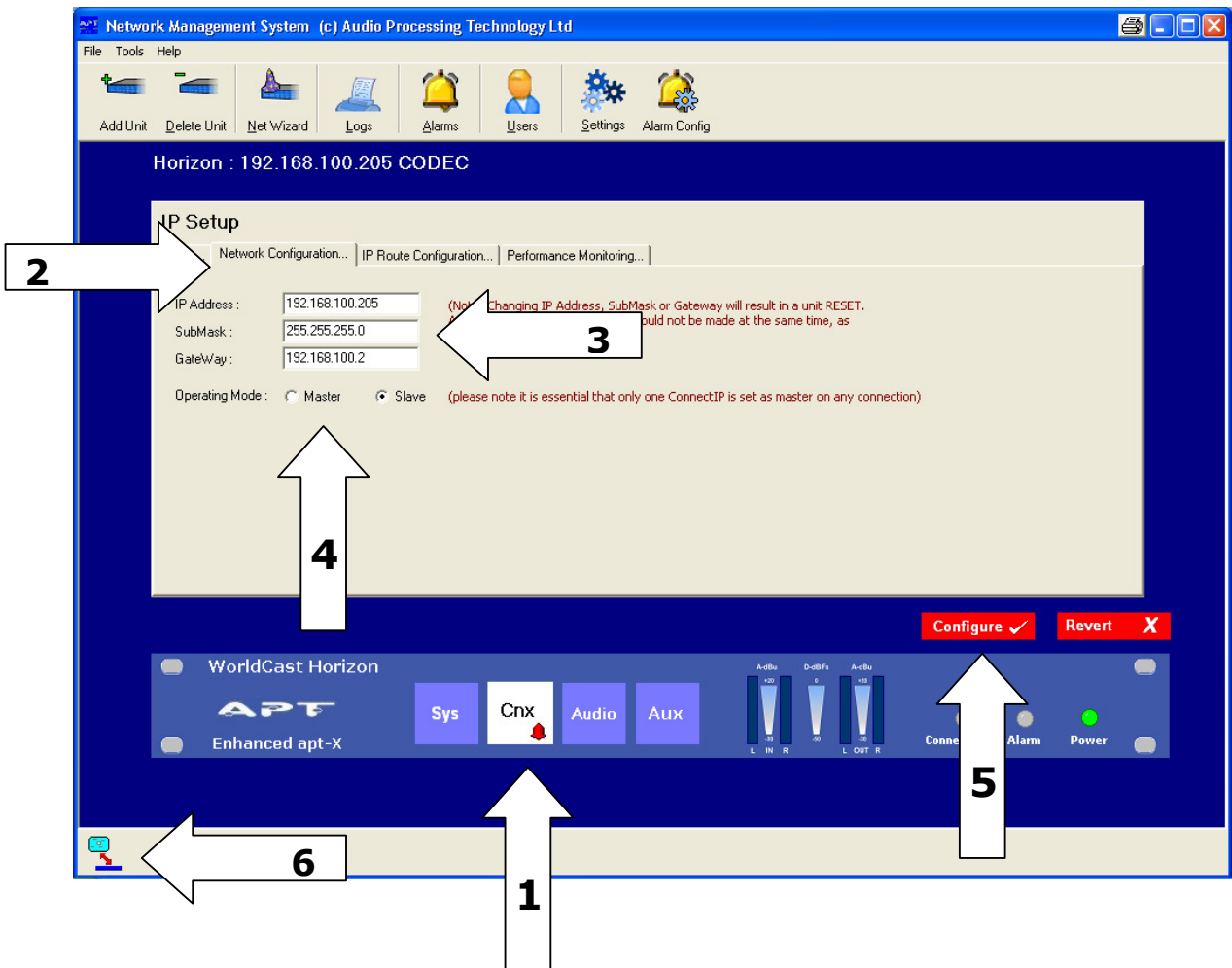
1. Select "Add Unit."
2. Enter the default IP address of "192.168.100.110".
3. Select "Horizon" as the Unit type.
4. Select "Add" to add the unit to the network display.



4.4 Horizon Network Configuration

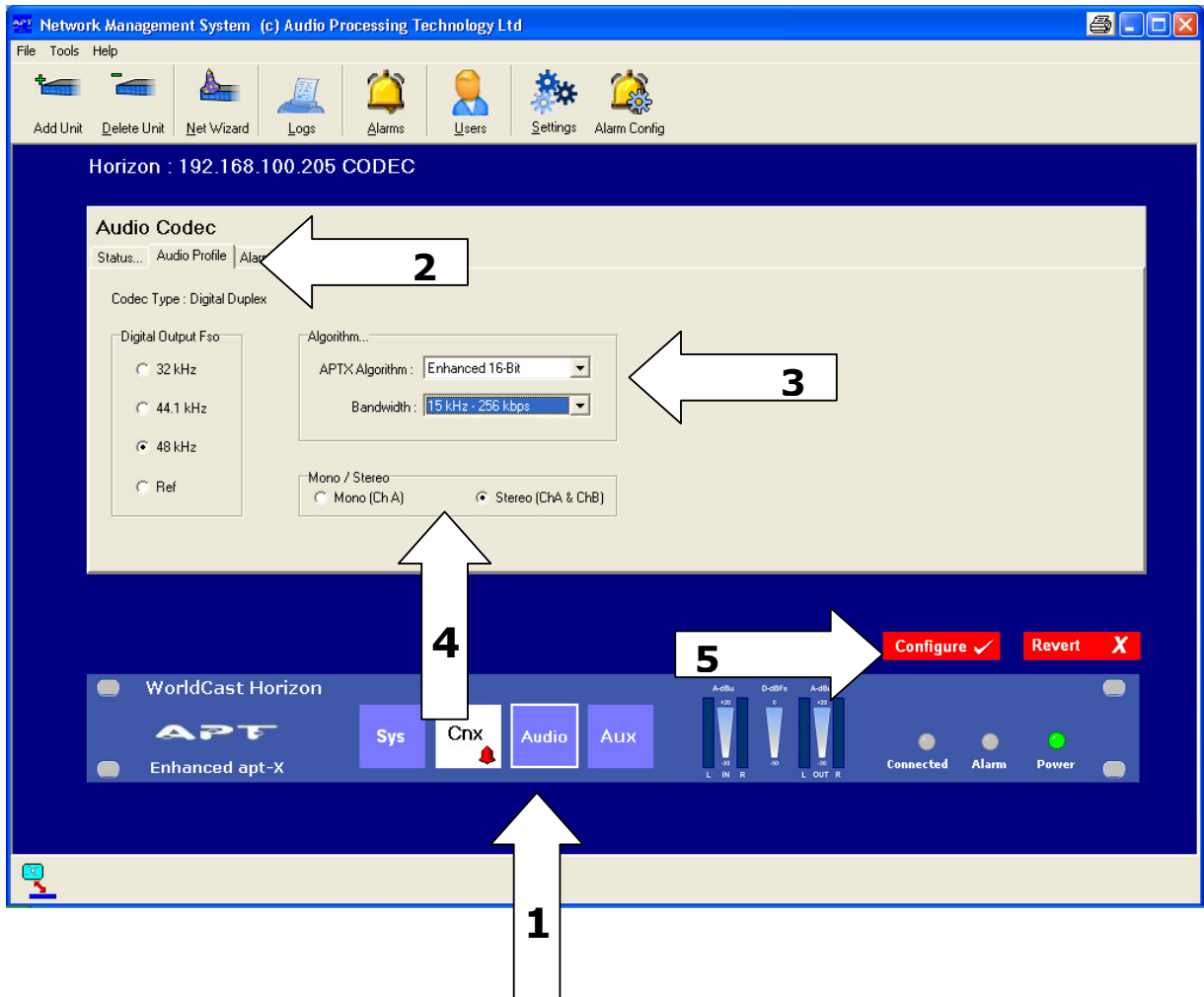
Double-click the displayed Horizon to enter the configuration options.

1. Select the "Cnx" button.
2. Select the "Network Configuration" tab.
3. Enter the required IP address, Sub Mask and Gateway.
4. Select "Master" or "Slave" operating mode. (Note – Only one unit can be Master and one unit Slave on any single link)
5. Select "Configure" to accept the network changes. (Note - The unit will now reboot)
6. Exit back to the network view.



4.5 Horizon Audio Configuration

1. Select the "Audio" button.
2. Select the "Audio Profile" tab.
3. Select the required "Algorithm" and "Bandwidth".
4. Select "Mono" or "Stereo"
5. Select the "Configure" button.



4.6 Basic Route Configuration

1. Select the "Cnx" button.
2. Select the "IP Route Configuration" tab.
3. Disable "Enable Receive"
4. Disable "Enable Transmit".
5. Select "Configure".
6. Enter the IP address of the remote unit.
7. Select "Configure".
8. Enable "Enable Receive"
9. Enable "Enable Transmit".
10. Select "Configure".

(Note – You MUST wait at least 5 seconds after disabling a route before enabling a new route)

Network Management System (c) Audio Processing Technology Ltd

File Tools Help

Add Unit Delete Unit Net Wizard Logs Alarms Users Settings Alarm Config

Horizon : 192.168.100.205 CODEC

IP Setup

Status... Network Configuration... IP Route Configuration...

Enable Receive Enable Transmit Receive/Transmit IP Port 5000

Receive Route Buffer Latency :

Transmit Route

Transmit Route Duplex Aux Data

Address : 192.168.100.206

Size : 512

0

Additional Transmit Routes (Audio Only)

Enable Route	IP Address
<input type="checkbox"/> Enable Route 2	0.0.0.0
<input type="checkbox"/> Enable Route 3	0.0.0.0
<input type="checkbox"/> Enable Route 4	0.0.0.0
<input type="checkbox"/> Enable Route 5	0.0.0.0
<input type="checkbox"/> Enable Route 6	0.0.0.0
<input type="checkbox"/> Enable Route 7	0.0.0.0
<input type="checkbox"/> Enable Route 8	0.0.0.0

Configure ✓ Revert X

WorldCast Horizon

APT

Enhanced apt-X

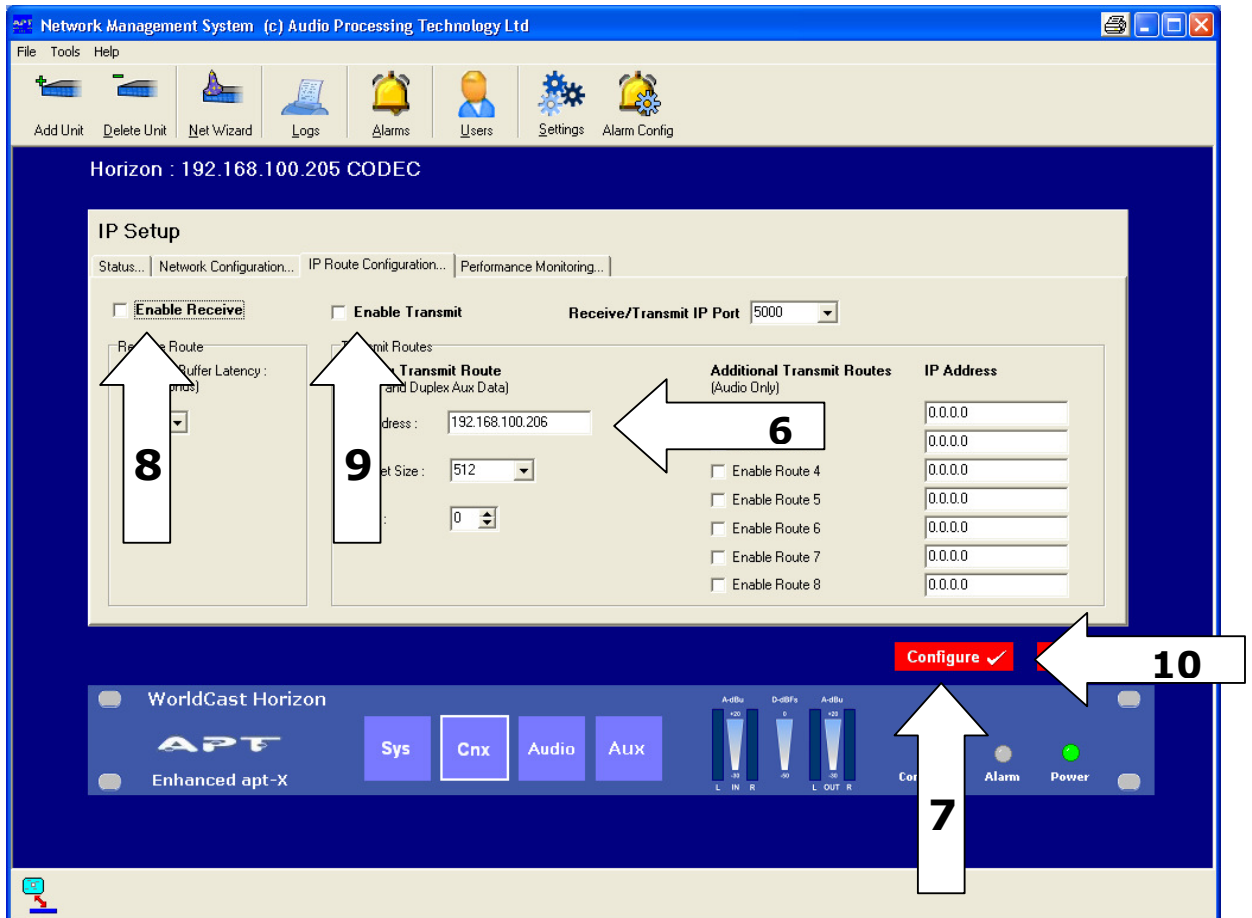
Sys Cnx Audio AUX

A-dBu D-dBfs A-dBu

L IN R L OUT R

Alarm Power

1 2 3 4 5



The configuration of a second unit to connect to the one just described is identical, but please bare the following in mind.

- Only one unit should be designated Master and one Slave.
- Both the Transmit and Receive routes MUST be disabled before making any changes to the routes.
- Audio configuration changes should NOT be made "on the fly".