

# DN-A7100

AV Surround Preampfier

**DENON**  
PROFESSIONAL



## Product Overview:

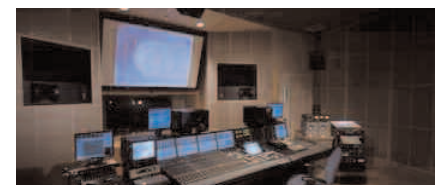
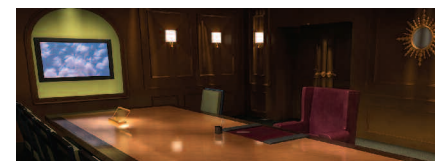
The DN-A7100 AV pre-amplifier is compatible with the most advanced surround sound formats, and because of its unique design, the DN-A7100 is ideal for any installation that requires high-quality, channel separated audio outputs — in particular those installations where adapting unbalanced RCA preamp outputs is completely unacceptable, or the extra weight of unused consumer power amps is not needed. Many installations now require surround sound decoding - From big installations with many multiple amps driving line array systems to small boardrooms and private cinemas with active monitor systems, the Denon Professional DN-A7100 is the most affordable, professional option.

## Key Features:

- 7.1 Balanced Line Level XLR Outputs (+4dB/-10dB – switchable)
- Balanced XLR Auxiliary Audio Input (+4dB/-10dB – switchable)
- HDMI Video Switching (ver. 1.1) (2 sources)
- 192kHz/24 bit Crystal® DAC for all 8 Channels
- 32 bit Digital Surround Processing Chipsets
- Set-up menu via Video Outputs (Composite, S-Video, Component)
- Video Convert Feature (Composite/S-Video to Component)
- Dolby Digital EX, Dolby Digital, DTS ES (Discrete 6.1, Matrix 6.1, Neo:6) Decoding
- Dolby Pro Logic IIx (Movie, Music, Game)
- Circle Surround II (Movie, Music, Mono)
- HDCD Decoding
- RS-232C Terminal for System Control
- 3U/HE

## Applications:

- Corporate Boardrooms
- Private Theatres
- Screening Rooms
- Post Production Monitoring



# DN-A7100

AV Surround Preamplifier

**DENON**  
PROFESSIONAL

## Further information:

### Real Balanced Audio Outputs - No more adapters!

At the top of the DN-A7100's feature list is its 8 true balanced line-level outputs. In many professional applications, the main feature utilized in any AV switching product is its ability to decode digital surround sound signals and output them to their specific speaker output.

### Balanced XLR Auxiliary Inputs

In addition to the DN-A7100's 8 balanced line outputs, it's also equipped with a pair of stereo XLR inputs. Switchable between +4dB and -10dB input levels, these inputs are ideal for any source (such as a professional CD player in a boardroom or an outboard microphone mixer in a conference hall).

### Full-featured AV Source Switching

The DN-A7100 is not just a surround sound decoding preamp. It is a full-featured AV source switcher. All audio and video sources in an installation are easily hooked up to the rear of the unit and from the front panel, the included IR controller, or from RS-232 the end-user may easily select whatever source they wish to view.

### Source Video Switching with Convert to Component

Even in today's technically advanced systems, not all video components have high definition outputs. Many boardrooms still rely on source products like VCR's and analog TV tuners. There is nothing worse than having to run multiple video cables to a display. With the DN-A7100's convert to component feature, it does not matter which input your device connects to. Simply plug your TV tuner into the composite TV input and your S-VHS into the S-video VCR input, the DN-A7100 converts the signals to the component outputs, allowing you to only run one set of cables to the display.

### 7.1 direct audio inputs

Ensuring compatibility with any future component, audio format, or external equipment with decoded outputs (i.e. SACD, Blu-ray player, HD-DVD player) is not a problem with the inclusion of the 7.1 direct audio inputs.

### Controllability

The DN-A7100 is controllable via its included Infrared remote controller or by RS-232c serial control. A 9-pin D-Sub connector allows for integration into any installation with a Crestron® or AMX® control system.

## Product Images:



## Useful Links:

[www.dm-pro.eu/dna7100](http://www.dm-pro.eu/dna7100)

[www.dolby.com](http://www.dolby.com)

[www.dtsonline.com](http://www.dtsonline.com)

[www.hdmi.org](http://www.hdmi.org)

[www.dm-pro.eu/dna7100](http://www.dm-pro.eu/dna7100)

# DN-A7100

AV Surround Preampfier

**DENON**  
PROFESSIONAL

## Controls & Outputs:



### Front side key:

- |                          |                  |                        |                       |
|--------------------------|------------------|------------------------|-----------------------|
| 1 Power switch           | 7 Band button    | 13 Input selector knob | 19 HT_EQ button       |
| 2 Key lock button        | 8 T-mode button  | 14 Cursor button       | 20 Memory button      |
| 3 Key lock indicator     | 9 Menu button    | 15 Exit button         | 21 Pure direct button |
| 4 Surround mode          | 10 Mute button   | 16 Simple setup button | 22 Auto button        |
| 5 HDMI indicator         | 11 Volume button | 17 Display button      | 23 Headphone jack     |
| 6 Infrared sensor window | 12 ATT button    | 18 Clear button        |                       |



### Rear side key:

- |                           |                         |                                 |                                    |
|---------------------------|-------------------------|---------------------------------|------------------------------------|
| 1 FM Channel or AUX input | 6 Component video input | 10 DC trigger                   | 14 Aux 1 analog input level switch |
| 2 FM antenna terminal     | 7 Digital input         | 11 Analog audio output level    | 15 Aux 1 analog audio input jack   |
| 3 Audio in/out            | 8 HDMI input/output     | 12 Balanced analog audio switch | 16 AUX 1 video                     |
| 4 Video in/out            | 9 AC inlet              | 13 Subwoofer output             | 17 RS-232C                         |
| 5 Monitor out             |                         |                                 |                                    |

[www.dm-pro.eu/dna7100](http://www.dm-pro.eu/dna7100)

# DN-A7100

## AV Surround Preampfier

**DENON**  
PROFESSIONAL

### Specifications:

#### Dimensions

Power supply	AC 100 - 240 V, 50/60 Hz
Power consumption	13 W
Dimensions excluding 19" rack kit	
Width	482.6 mm
Height	140.8 mm
Depth	353.8 mm
19" rack kit height	3U/HE
Weight	10 kg

#### Inputs / Outputs

##### Audio Inputs

8 Sets Analog Inputs	TV, DVD, VCR, DSS/VCR2, CD, TAPE, CDR/MD, Aux 2 (part of 7.1 direct in)
1 Set Analog Balanced Input	Aux 1 (XLR L/R Input - switchable +4dB/-10dB)
1 Set Discrete Analog Input	Aux 2 (7.1 direct in - L/R (stereo), SL, SR, C, SBL, SBR, SW)
3 Digital Inputs	Optical x 3 (assignable) Coaxial x 2 (assignable)

##### Audio Outputs

8 Balanced Analog Outputs	L, R, C, SL, SR, SBL, SBR, SW (XLR, switchable +4dB/-10dB)
1 Unbalanced Audio Output	SW
3 Sets Analog REC Output	VCR, TAPE, CDR/MD2
Digital Outputs	Optical x 1 Coaxial x 1
1 Headphone Output	1 - 1/4" Headphone Output (front panel mounted)

##### Video Inputs

2 Sets HDMI (v1.1) Input	Input-1, Input-2 (assignable)
3 Sets Component Video Input	Input-1, Input-2, Input-3 (assignable)
5 Sets S-Video Input	TV, DVD, VCR, VCR2, AUX1
5 Sets Composite Input	TV, DVD, VCR, VCR2, AUX1

##### Video Outputs

1 Set HDMI (v1.1) Output	Output
2 Sets Component Video Output	Monitor Out-1, Monitor Out-2
2 Sets S-Video Output	VCR, Monitor (will convert to Component)
2 Sets Composite Output	VCR, Monitor (will convert to Component)

##### Control

RS-232	1 - DB9 Bi-Directional connector
Infrared	1 - IR reciever (front panel mounted)

##### Other Connectors

FM Antenna In	Coax (75 ohm)
AM Antenna In	Available
DC Trigger	1/8"
AC Inlet	IEC Weighted, Grounded with Detachable Cord

### In the box:

- Power cable
- AM/FM aerials
- IR Remote control
- User manual



Dimensions & weight: (H x W x D): 5.5" x 19" x 13.875" (140.8mm x 482.6mm x 353.8mm) - 22lbs / 10kg, 3U/HE

[www.dm-pro.eu/dna7100](http://www.dm-pro.eu/dna7100)