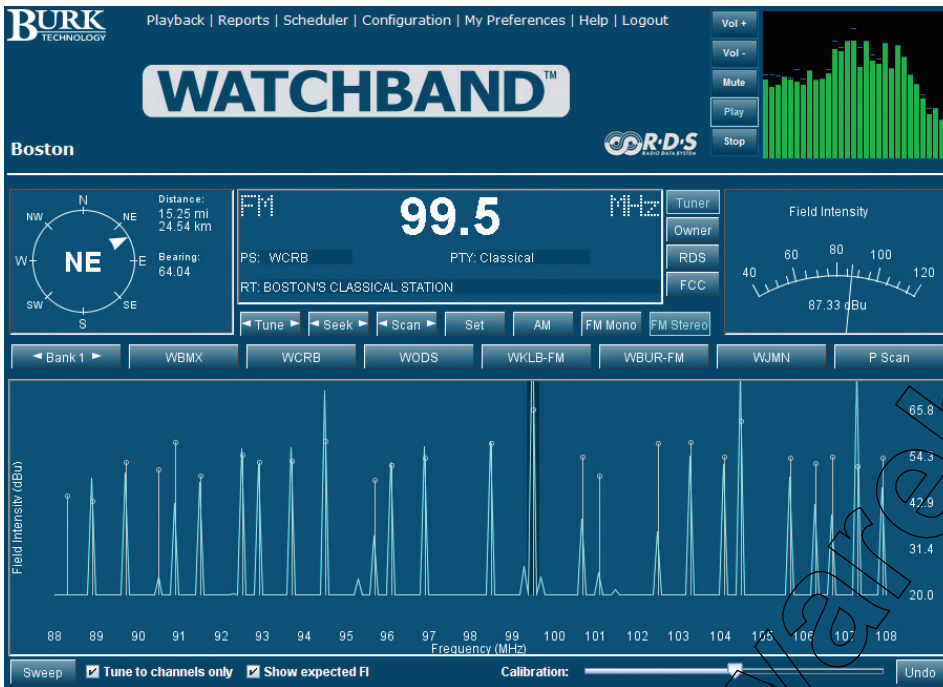


WATCHBAND™



With Watchband, users can tune to any AM or FM station, listen live, view RDS, and monitor real-time field intensity data. The web-based user interface is served from a PC running Watchband server software (included).

Market Monitoring Made Easy

Burk Technology's Watchband™ Remote Receiver delivers powerful station and market monitoring tools to managers, engineers and programming departments. With Watchband, you can remotely monitor and log audio metrics, create competitive playlist data, and log off-air audio for market stations.

Now, local or corporate engineering knows for sure how long an audio fault lasted or how long the station was off the air. It's easier for regional programming staff to collaborate on content and scheduling strategy. And management can listen to live or logged audio to monitor quality and consistency. With the web-based user interface, station, group and corporate stakeholders can all benefit from a single installation.

LOCAL, REGIONAL AND GROUP PDS CAN...

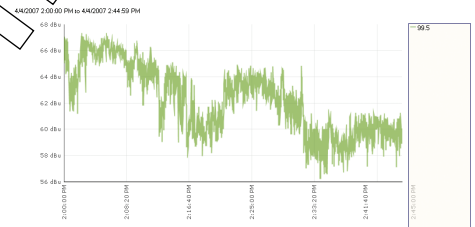
- View playlists for group-owned or competing stations
- Listen live or play back logged audio for any station in the market
- Compare signal strength to competitors and other stations
- View audio metrics for competitive comparisons of average levels, maximum peaks and average peaks

Generate Playlists for Market Stations

Watchband makes competitive playlist monitoring simple. With automatic logging of radio text, programming staff can use Watchband to reveal content on FM stations broadcasting artist and song title via

Radio Text	Count
ANYWAY by MARTINA MCBRIDE	6
BEER IN MEXICO by KENNY CHESENEY	6
SETTLIN by SUGARLAND	6
BEFORE HE CHEATS by CARRIE UNDERWOOD	5
LAST DOLLAR (FLY AWAY) by TIM MCGRAW	5
LOST IN THIS MOMENT by BIG & RICH	5
MY WISH by RASCAL FLATTS	5
YOULL ALWAYS BE MY BABY by SARA EVANS	5
A FEELIN LIKE THAT by GARY ALLAN	4

Watchband generates playlists from your own or your competitors' radio text.



Watchband monitors and logs RF levels and audio parameters off-the-air, so engineers can see and show audio, phase and signal strength histories. Above, field intensity declining in heavy snow.

ENGINEERS AND TECHNICAL MANAGERS CAN...

- Receive email alerts for audio and signal level alarms
- Correlate out-of-phase conditions with ad spots, syndication or other sources
- Track detailed histories of audio levels and field intensity
- Show band congestion, noise floor and new signals (licensed or unlicensed), all in graph form

radio text. Monitor individual day-parts, compare rotations for specific songs, or analyze a station's programming over days, weeks or months. You can view a time stamped playlist history and show total count for each song played.



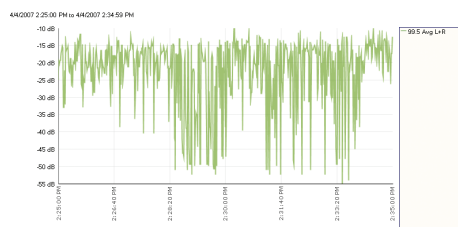
7 Beaver Brook Road, Littleton, MA 01460 • www.burk.com
Broadcast, Government and International Sales: sales@burk.com • 800-255-8090

Show Proof-of-Performance for RDS Messaging

Prove to your sponsors that their RDS ads are reaching your audience. In addition to generating playlists, Watchband logs RDS advertising messages and allows you to offer proof-of-performance logs to your sponsors. Groups can monitor non-traditional revenue activity on their own stations or watch what others in the market are doing.

Analyze and Compare Audio Levels

Logged audio levels offer detailed analysis of any station in the market. Use Watchband to demonstrate peak limiting, compression and clipping. Quality-check your own audio and compare your station's sound to others in the area.



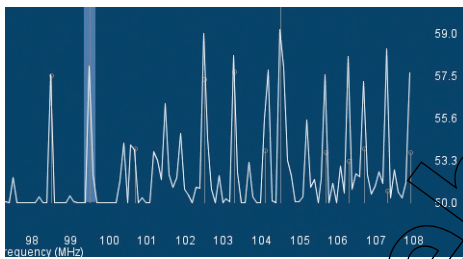
Monitor average levels, maximum peaks and average peaks.

Log and Skim Audio with Remote Playback

With remote access to off-air audio logs, engineering departments can cross-reference audio alarms, while managers and programming staff gain a valuable listening and archival tool. Listen to new talent from across the country. Verify a listener's concern about audio quality. Skim the top morning drive stations for snapshots of competitor activity. If your group uses consolidated studios, translators or boosters, now you can monitor off-air audio for stations beyond the reception area.

Sweep AM and FM Bands for Strip Chart Reporting

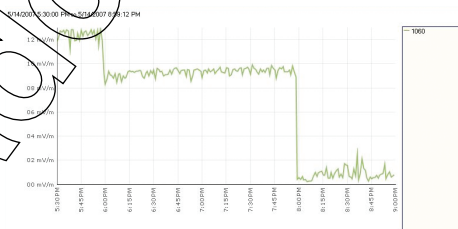
Watchband performs on-demand tuning sweeps for the entire AM or FM band to show actual and expected field intensity in strip chart format. Users can click within the chart to tune to any station and reveal licensee and antenna data for FM stations, including HAAT and ERP.



Use the AM or FM band sweeps to show relative field intensity for all stations in the market.

Track Power Changes on AM Stations

Compliance monitoring for nighttime power changes just got easier. By logging signal strength during critical hours, AM operators can verify power changes and corroborate remote control logs. Let Watchband send an email confirmation that the scheduled power drop or signoff happened.



Watchband monitors and logs signal levels to provide evidence of night authorization compliance. Here, signal strength changes at sunset.

Multi-Receiver Connectivity

A single receiver allows multi-channel alarm monitoring, audio skimming, playlist generation and audio level logging. Connect a second receiver to the same server PC and

monitor two program sources at once, or log playlist data for one station while listening to another.

Data Collected

- Program audio
- L, R, and L+R audio averages, max peaks and average peaks.
- Out of phase duration
- AM and FM field intensity
- Decoded RDS Data Groups (PS, RT, PTY, M/S, PIN, PI, TP, TA, Clock, AF)

Alarms Reported

- Left or right channel loss
- Audio silence
- Out of phase
- Low signal strength

Receiver Specifications

Dimensions

9.0"L x 5.0"W x 1.0"H
(22.9cm L x 12.7cm W x 2.54 cm H)

Operating Temperature

0 to 50°C

External Connectors

DB-9F RS-232 connection to server; 50 Ohm BNC antenna input; 1/8" stereo line out for connection to PC sound card; 9VAC wall adapter (provided)

Minimum Server Requirements

1GHz processor with 1GB RAM; Windows Vista, XP or Server 2003; soundcard with stereo line in; broadband internet access with static IP address

Client PC Requirements

Broadband internet access; Internet Explorer 6.0 or later; Sun Microsystems Java Virtual Machine; Windows Media Player