

TRANSMITTER REMOTE CONTROL AND FACILITY MANAGEMENT

Move beyond remote control to "Total facility management"

Broadcast MANAGER:

Our remote control units can be integrated into a complete Radio (AM, FM, HD) and TV (analog and DVB-T) monitoring solution, using the unique Broadcast MANAGER software, for centralized management of data, configurations, communications and alarms.

SCRIPTEASY

SCRIPTEASY is a powerful graphic interface that allows the user to configure how the remote control system will behave under any possible circumstance. The SCRIPTEASY software is installed on a computer remotely connected to our remote control units (IP2 CHOICE, Remote control Silver or Remote control option for the GOLDENEAGLE HD).

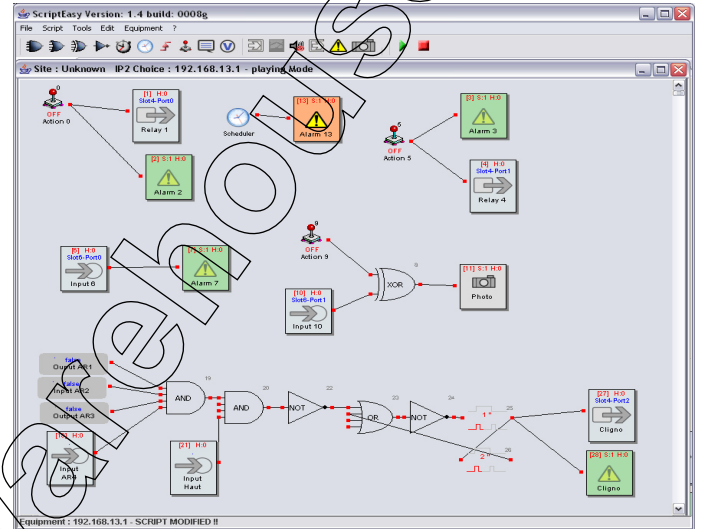
It enables:

- input/output and macro configuration
- creation of the routines and the alert sequences
- display in real time of the status of each object of your script.

It includes a scheduler for time-based automatic actions and enables readings of I/O status.

Ex of applications:

- Sound processing RESET when audio lost
- Backup transmitter start
- N+1 system management
- Automatic actions triggered by events
- Send I/O status or alarms by email, SNMP or voice call



SCRIPTEASY Viewer:

This module complements the SCRIPTEASY Creator software module.

This graphic interface allows users to see and control the status of each object in the script.

The screenshot shows the ScriptEasy Viewer interface. At the top, there are buttons for "Relays" (Input 6, Input 10, Input A14, Input Haut) and "Alarms" (Alarm 2, Alarm 3, Alarm 7, Alarm 13). Below these are "Actions" (Action 0, Action 5, Action 9) and "Digital inputs" (Relay 1, Relay 4, Cligno). A "General view and sorting by sub-set" section is on the left. At the bottom, there is a log table with columns for Type, Date, Severity, Origin, and Info.

Type	Date	Severity	Origin	Info
Alarm end	2006-10-08 23:32:45	1	Cligno	Alarm end
Alarm start	2006-10-08 23:32:45	1	Cligno	Alarm start
ScriptEasy	2006-10-08 23:32:44	4	Action 9	ScriptEasy
Cligno	2006-10-08 23:32:44	6	Cligno	value=0
ScriptEasy	2006-10-08 23:32:43	4	Action 5	ScriptEasy
ScriptEasy	2006-10-08 23:32:43	4	Action 0	ScriptEasy
Cligno	2006-10-08 23:32:43	6	Cligno	value=1
Alarm start	2006-10-08 23:32:43	1	Alarm 13	Alarm start
ScriptEasy	2006-10-08 23:31:19	4	Action 0	ScriptEasy
ScriptEasy	2006-10-08 23:31:19	6	Relay 1	value=0

TRANSMITTER REMOTE CONTROL AND FACILITY MANAGEMENT

Move beyond remote control to "Total facility management"

IP2 CHOICE



Flexible system- Modular design

The IP2 CHOICE has a modular design and offers a large choice of I/O and communication ports so that one unit can meet the requirements of a single or a multiple transmitter site and can monitor and control any kind of equipment and sensors. 12 slots are available for I/O boards. Depending on configuration the IP2 CHOICE can contain up to 40 analog inputs, 128 digital inputs, and 64 relay outputs. Up to 3 serial ports as well as 4 USB ports and 2 10/100baseT Ethernet ports are available for the tunneling and API applications.

A touchscreen is available as an option and enables visualization and control of the I/O.

12 slots maximum:

Type of interface	Metering	Status	Relays	RS232 port
Number of boards (max)	5	8	8	3
Number of I/O per board	8	16	8	N/A
Number of I/O per equipment (max)	40	128	64	N/A



Remote control Silver

The SILVER Remote Control is a powerful Transmitter Remote Control System with TCP/IP built-in. The unit comes equipped with 16 Digital Inputs, 8 Analog Inputs, 8 Relay Outputs and 1 RS232 interface connection. It includes the Scripteasy Creator as standard and the Viewer as an option.



The screenshot shows a web interface with a navigation menu on the left containing items like Home, Product ID, Date / Time, Users, Network, PPP dialout, PPP dialin, Support, SMTP mail client, SNMP agent, SNMP notifications, Event log, I/O layout, and Downloads. The main content area is titled 'Inputs / Outputs' and includes a diagram of the unit's ports. Below the diagram, there are sections for 'Motherboard' (Version: AZT545S1 FdP (01/10/06 14:28:11)), 'COM ports' (Name: COM1, Usage: Modem, TCP Tunnel Port: 7401), and 'USB-Serial ports' (Name, Usage, TCP Tunnel Port).

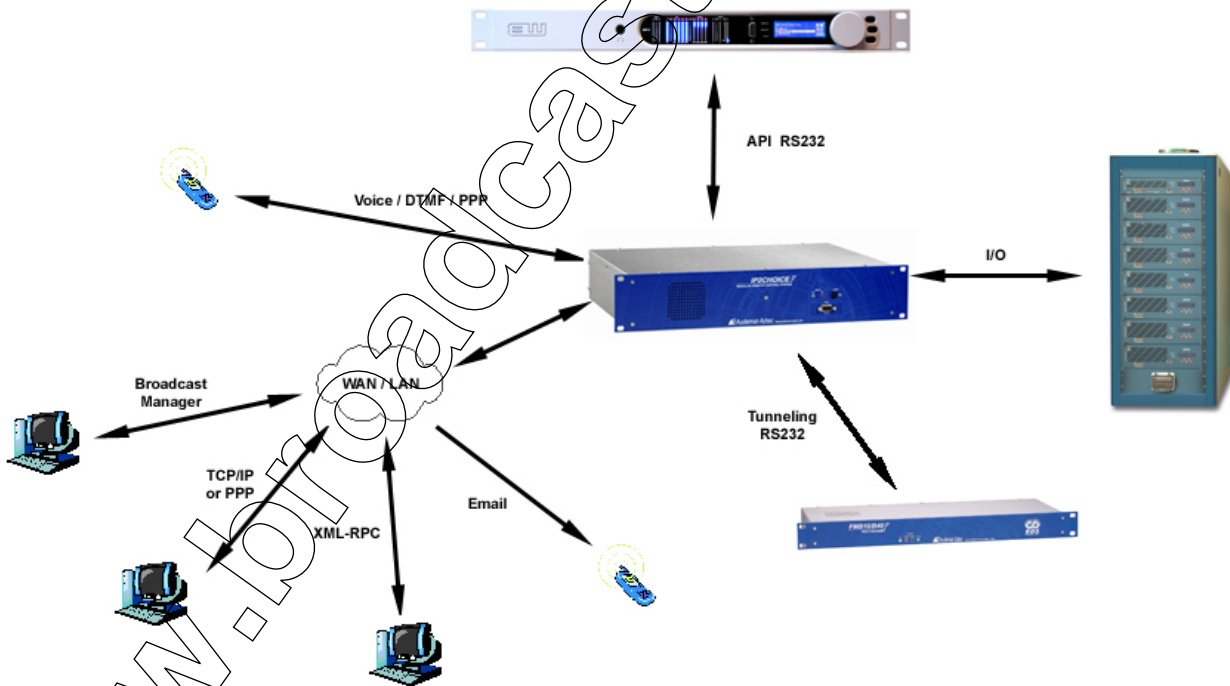
Embedded website: I/O page

TRANSMITTER REMOTE CONTROL AND FACILITY MANAGEMENT

Move beyond remote control to "Total facility management"

COMPARISON TABLE		
	IP2CHOICE	SILVER REMOTE CONTROL
Programming	Web server built-in + Scripteasy (Creator and Viewer modules)	Web server built-in + Scripteasy Creator module (Viewer module available as an option)
Communication ports	2 TCP/IP 1 RS232 (up to 3) 4 USB (webcam, tunneling..)	2 TCP/IP 1 RS232 1 USB (webcam, tunneling..)
Nbr of I/O	12 slots: up to 128 status up to 64 metering channels up to 64 relays	3 slots: Standard configuration: 16 status 8 metering channels 8 relays
Rack format	19" - 2 U	19" - 1 U
Broadcast Manager	Yes	Yes
USB	4	4
Temperature + humidity	0 to 45°C (32°F to 113°F) 0 to 95%	0 to 45°C (32°F to 113°F) 0 to 95%
Power requirement	115/230 VAC - 50/60Hz	115/240 VAC - 47/63Hz
Options	Wiring patch panel, Infra + wiring, connection kits Sensors and electrical accessories: please, consult us	

OVERVIEW CAPABILITIES



Audemat[®]
Broadcasting Innovation

contact@audemat.com - www.audemat.com

Head office:

20, avenue Neil Arsmstrong - F-33700 Bordeaux-Mérignac-France
Tel: +33 (0)557 928 928 - Fax: +33 (0)557 928 929

US office:

19595 NE 10th Av. Suite A - Miami, Florida 33179
Tel: +1(305) 249 3110 - Fax: +1(305) 249 3113