



# GOLDENEAGLE FM

Off air FM monitoring and Remote control

**GOLDENEAGLE FM is an FM multi-receiver solution designed as a powerful off air monitoring system with remote control capabilities.**

From one or several antennas, the system monitors automatically, in real time, the quality and continuity of up to 40 FM programs and notifies the relevant person of any problem by sending an alarm.

**GOLDENEAGLE offers innovative functions** such as audio streaming, audio recording, automatic scanning and measurement analysis and storage.

The embedded web site facilitates navigation in a user-friendly IP environment.

Linux OS ensures high reliability and easy software upgrades.

## Innovative multi-receiver and multi-task performer

Three agile & intelligent receivers carry out continuous, reliable and enhanced monitoring of multiple programs.

Each receiver manages powerful algorithms in real time enabling the user to run simultaneous complex operations (remote measurements, scanning, audio streaming,...) without interrupting the monitoring.

Using 2 or 3 antennas, the user can configure the FM programs and functions which are dedicated to each RF input.

## Parameters monitored

- RF level and RF intruder
- Modulation level (MPX)
- Audio level (L, R,)
- Stereo presence
- Pilot and RDS sub-carrier level
- Audio phase opposition
- RDS parameters: PI, PS, TA, AF, TMC,....
- RDS Bit Error Rate
- Digital inputs/outputs

These measurements are stored in the GOLDENEAGLE and can be displayed dynamically real-time on a monitor, on graphic charts or text formats (measurements over one hour or one day).

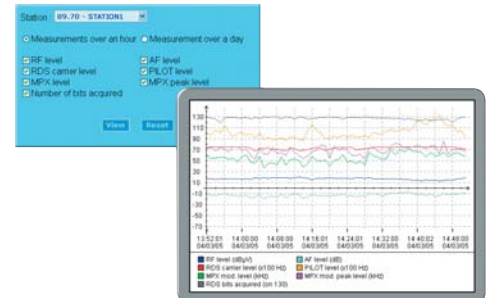
Real time measurement can be

displayed by selecting any frequency. Incidents and alarms are stored in the eventlog.

A complete FM Base-band scan enables pirates and new carriers to be detected.

Movement detection is also available with the webcam option.

Watermarking decoding option for program identification is available (Documentation upon request)



## Audio Recording and streaming

The audio streaming is processed with different quality levels depending on your communication link capability. With integrated hard drive, audio recording of a program can be carried out:

- at fixed time (e.g for local program slot)
- on Traffic Information transition (RDS/TA and EON-TA)
- on Audio incidents

# GOLDENEAGLE FM

Off air FM monitoring and Remote control

## Remote Control for a "total control"

GOLDENEAGLE offers different telemetry option for advanced operations.

In standard release, GOLDENEAGLE offers 4 digital inputs and 4 relays.

An optional board with 8 analog inputs, 8 digital inputs and 8 relay outputs can be installed in the GOLDENEAGLE.

For full remote control of all parts of a transmitter site and automatic actions, choose IP2 Choice (up to 40 analog inputs, 128 digital inputs, 64 relays and 4 serial ports).

Scripteasy powerful graphical software enables easy script creation and I/O status visualization.

## Full IP communication

Communication is made via RS232 (PPP protocol for analog, ISDN and cell phone modem) or directly via Ethernet for remote or local access.

Alarms are sent by email or SNMP traps.

Local relays can be triggered upon alarm detection.

## MANAGER web server software

MANAGER is the perfect solution for the management of multi-site remote GOLDENEAGLE's. It is a web server based system that can manage alarms, measurements, eventlogs and data from the GOLDENEAGLE's. This information is centralized in a database and can be dispatched automatically to the qualified staff.

### MANAGER features:

- Alarm centralization
- Alarm dispatch (SMS, fax, emails)
- 3D scanning representation
- Map-based interface with site location
- Site configuration (list of equipment on site)
- GOLDENEAGLE configuration
- Consultation
- Status of all sites
- Database for each site
- IP2 Choice management



## Specifications

### Hardware description

- 2U - 19"
- 3 FM 87.5 - 108.00 MHz calibrated receivers
- 3 RF inputs (input level from 20 to 120 dBμV with external attenuator)
- Linux OS

### Communication Ports

- 1 10/100 Base T Ethernet port
- 2 RS-232 (1 for modem, 1 for local access)
- 1 audio output for headphones
- 1 USB port e.g. webcam connection

### Communication Protocols

HTTP (CGI scripts), FTP, SNMP, SMTP, Telnet, PPP (for TCP/IP communication via modem), Shoutcast

### Options

- Webcam
- Analog or GSM/Cell phone or ISDN modem Kit
- MANAGER web server software
- Integration of MIB
- I/O option (8/8/8)
- IP2 Choice (modular I/O)
- I/O Scripteasy software
- Watermarking decoder embedded software (AUDIO TAG reader)

### Other products available in GOLDENEAGLE range

- GOLDENEAGLE AM
- GOLDENEAGLE TV (analog)
- GOLDENEAGLE HD
- GOLDENEAGLE DVB-T

 **Audemat-Aztec**  
Broadcasting **Innovation**

contact@audemat-aztec.com - www.audemat-aztec.com

### Head office:

20, avenue Neil Armstrong - F-33700 Bordeaux-Mérignac - FRANCE  
Tel: +33 (0)557 928 928 - Fax: +33 (0)557 928 929

### US office:

1021 Ives Dairy Road, Suite #216 - Miami, Florida 33179 - USA  
Tel: +1(305) 249 3110 - Fax: +1(305) 249 3113

