

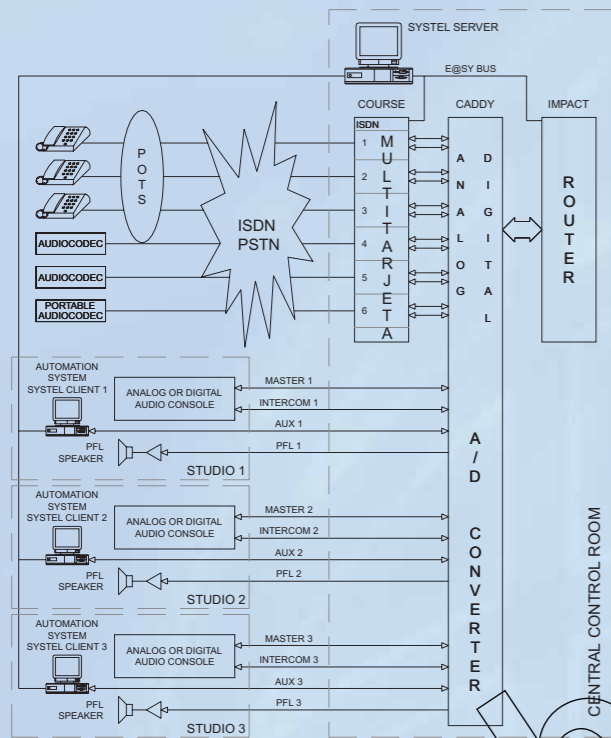
Radio and TV Multi-channel Talk-Show Unique Approach

SYSTEM 6000

The SYSTEM 6000 runs on the IMPACT summing audio router producing Mix-Minus (N-1 clean feed) channels up to a maximum of 120 distributed in a 20 channels controllable in a prioritized way from different workstations. It also controls the Eagle audio codec or the Course. A monitor screen provides all the audio codec operational controls, we can receive or make calls, using ISDN, analog or mobile lines, using individual or shared phone lists.

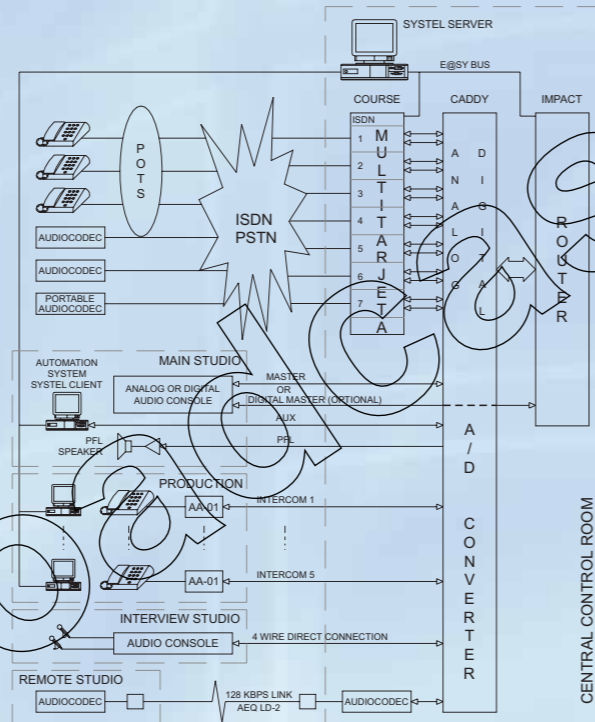
12 LINES FOR THREE STUDIOS

Using the COURSE with 6 dual communication boards (12 ISDN or analog lines) provides 12 lines. The audio is sent to the IMPACT audio router. The system is operated from a communication point in each studio to send the ON AIR audio to the mixer. We can distribute the lines according to the studio needs at different production stages. The calls can be from wired or mobile phones, from analog or ISDN lines.



14 LINES FOR A STUDIO WITH 5 WORKSTATIONS FOR PRODUCERS, ONE ADDITIONAL STUDIO AND A REMOTE STUDIO

With a COURSE system with 7 boards (4 ISDN, 2 Dual IP and 1 Dual Hybrid) we have 14 lines. The audio is sent to the IMPACT audio router. The audio is also sent from an additional Codec from a remote studio. The System 6000 operates in the main studio, the ON AIR channel is sent to the main console. The automation system receives the auxiliary (audition) channel. The communication traffic is managed by several production workstations. The incoming calls come from regular or mobile phones, as well as analog, ISDN or DSL lines.



Software Components:

System 6000 1: Licence for the first E@sy network client
System 6000 +: Licence for each E@sy network client

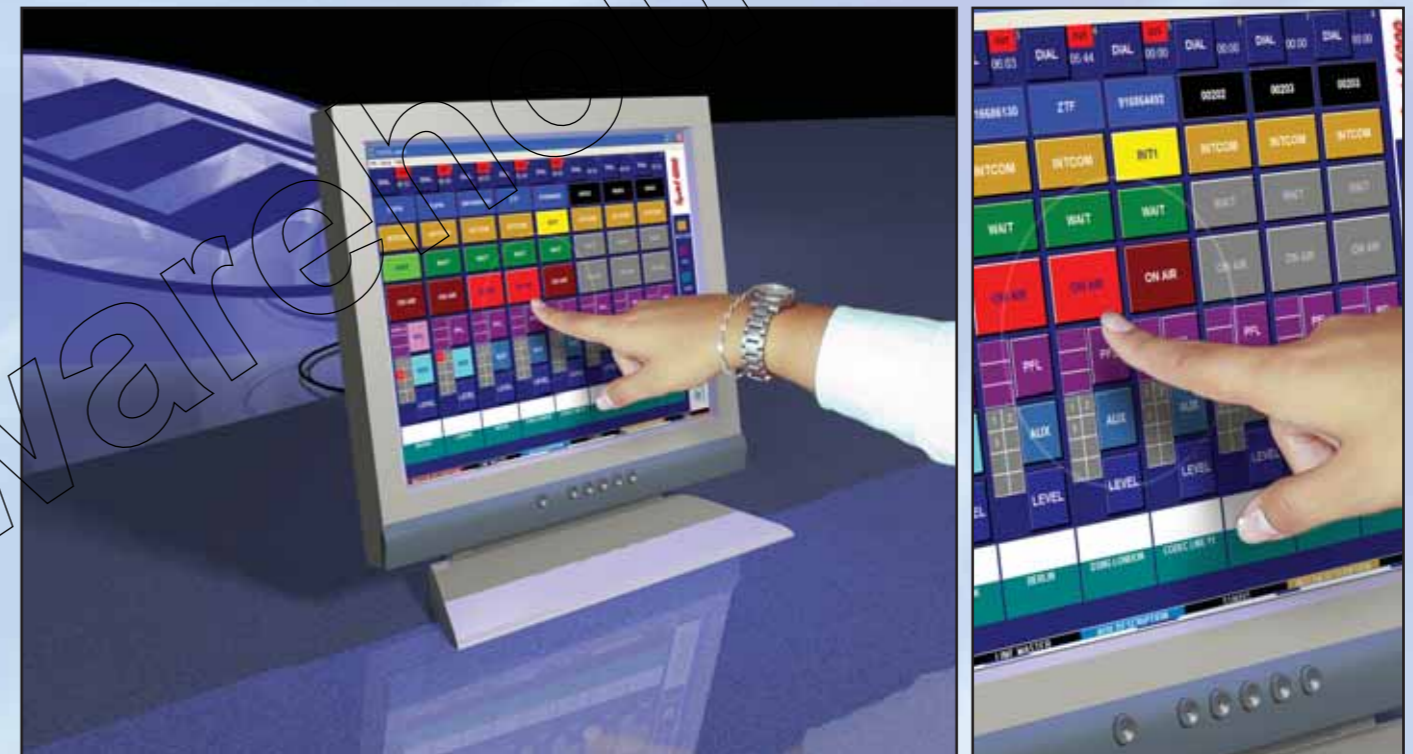
Hardware Components:

Impact Digital Audio Router / CADDY AD/DA converter / Course Multi-format System / Eagle ISDN Codec / AA-01 2-wire-4-wire Converter / Computers and network components / Systelset Terminals.

SYSTEM CONFIGURATION REQUESTS:
(Contact an AEQ distributor to set up configuration)

SYSTEM 6000

Radio and TV Multi-channel Talk-Show Unique Approach



The SYSTEM 6000 provides agile and productive communication to your sport and entertainment programming. Suitable for a wide array of broadcasting programs such as Talk-Shows, live debates, news conferences, news and sports multicasting.

The multiple channels such as program contributions and talk-backs can be in analog or digital format from studio consoles, fixed communication networks or telephone hybrids.

It can use the telephone hybrid or ISDN lines in the COURSE Multi-format Communication or from the high quality full-duplex EAGLE audio codec, using an exclusive phone directory per device.

The system provides pulse or tone dialing, ring call detection, caller ID and echo cancellation.

System6000

Radio and TV Multi-channel Talk-Show Unique Approach

BENEFITS AND SPECIAL FEATURES

- It allows On-Air multi-caller conferences, intercoms and cues with analog or ISDN lines.
- Scalable in the number of channels and the control points.
- Expand and enhance the performance of the previous SYSTEL 3000 System.
- Provides gain control for the input and output of each channel.
- Multi-user and multi-tasking system.
- Integrates the hardware with one control software.
- Allows the use of a TOUCH SCREEN interface (Recommended).
- Multi-user and multi-tasking system.

SYSTELSET



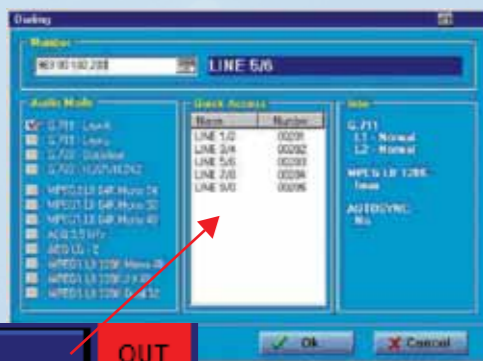
Systelset is an integrated intercom complementing the SYSTEL 6000 system. It provides the user with the tools needed to interface with the system. It is design for space saving, capable of holding a regular monitor weight or a T.P.V. type monitor.

This system is a 4-wire 2-point intercom. To avoid noise, the inputs and outputs are transformer balanced. An electret microphone is provided along with a built in speaker for monitoring. A headset can be connected to bypass this feature.

Two controls on the front panel labeled 'Tx' and 'Rx' are provided to adjust the send and receive levels.

There is a transformer balanced auxiliary input connected to the internal speaker. Its level can be adjusted by the 'PFL LEVEL' control.

Two inputs, L and R, internally strap into a mono signal, are connected to the build-in speaker. It allows for multimedia sound card output and any other additional device to be connected. Two LEDs in the front panel indicate the signal presence in these two inputs. This way when an incoming call comes into the Systel 6000 system, the sound card in the PC will generate a RING sound in the speaker and lights the corresponding LED to alert the user.



The SYSTEL 6000 Software with its user friendly interface facilitates the multiplexing of 20 Analog or ISDN lines. The user can transparently manage the lines on the EAGLE and COURSE Audio Codec/Hybrids to provide ON-AIR conferences between multiple points and each channel. The MIX-MINUS (N-1) signal for each unit runs on the flexibility of the IMPACT-CADDY Audio Router.

The program controls the hardware in real time through the **E@sy** bus.

▪ **Receive or make calls and group them in multi-conference.** Each Systel 6000 group of calls (Multiplex) has a MIX-MINUS (N-1) hence each line sends the audio mix to master without receiving its own audio.

▪ Each Multiplex participant has one of the following statuses:

- INTERCOM** - speak only to the program coordinator.
- WAIT (Hold)** - Listen to the other lines in the group without participating.
- ON AIR** - Listen and talk to the group (sends to **MASTER**).
- PFL** - (Cue) the audio is sent to the CUE bus.
- AUX** - (Audition) the audio is sent to the Auxiliary bus.

▪ **The AUX channel (Audition) can be used as a second Master**, thus creating two Master Buses or it can be used as Auxiliary (Audition). It is possible to establish up to 8 auxiliary channels and setting them up as 2-wire or 4-wire.

▪ It is feasible to create up to 8 intercoms to talk to one, several or with all the participants.

▪ The system allows for the use of a Touch Screen Monitor and is available to those users who want this feature.

The On-Air personality, in the ON-AIR studio, can introduce calls as instructed by the producer and/or call screener. The calls can be placed ON-AIR, put ON HOLD or DROPPED from the discussion. The program producer can opt to put the caller on line 1 to interact ON-AIR or off air with callers in lines 2, 4 7 or any combination that he/she wishes to set up.

