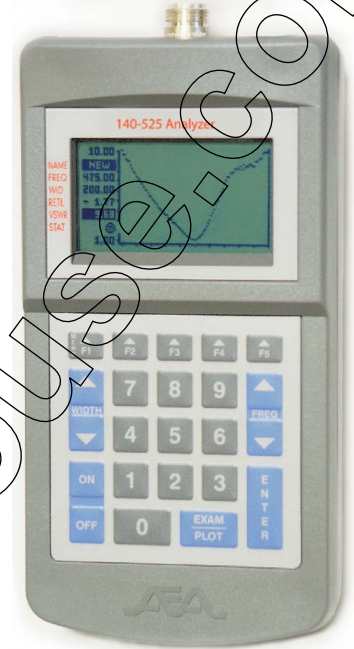


AEA Technology SWR meters graph and examine VSWR and return loss plots from 135 - 525MHz . The graphical presentation displays the 2:1 bandwidth and the optimum match frequency. This units feature 15 plot memories, auto scaling, and a field strength meter function. They may also be used as signal generators. These portable, handheld meters weigh under 25 ounces including batteries.

The Analyst Director software connects your PC to the analyzers providing nearly infinite plot storage, remote control, multiple plots on a graph, printouts, and interfaces your measurements to other applications in database or graphical format. You may also combine multiple sweeps into a single fine resolution, wide bandwidth plot.



Optional Softcase



## FEATURES

- Return loss and VSWR modes
- Auto scaling
- Auditory cues
- Signal generator mode
- Relative field strength mode
- Self test and calibration functions
- Non-volatile memory storage for 15 plots
- Compatible with alkaline, NiMH and NiCd batteries
- Battery saver auto-off function
- SuperTwist LCD display for high contrast
- Optional Windows™ Analyst Director Software
  - High resolution plot display on PC
  - Remote control capability
- Simultaneous multiple plot viewing in memory mode

## BENEFITS

- Simplicity of tuning and checking antennas
- Ability to archive and document plots
- Lightweight, portable, and battery power capability

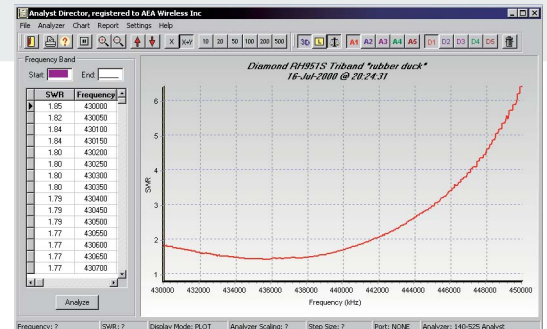
## SPECIFICATIONS

- Frequency range 135 - 525 MHz
- Tuning/display resolution Increments of 10 KHz
- Display width 0 to 200 Mhz
- Characteristic Impedance 50 Ohms
- Antenna connector Industry standard "N" connector
- Output power >+5 dBm@50ohms
- Harmonic and spurious >40 dB below fundamental
- VSWR plotting range 1:1 to 10:1
- Return loss plotting range -1.7 to -30 dB
- Maximum reverse input +20 dBm
- Measurement speed Single frequency: Several sweeps per second  
Normal sweep: < 2 seconds
- Nonvolatile memory Store 15 plots
- Serial interface speeds 9600, 19,200 baud
- Power requirements 12-16 VDC @ 300 or 8 AA's (Alkaline or NiMH)
- Size 8.5" x 4.3" x 2.25"
- Weight 16 oz.( < 25 oz w/batteries)

140-525 .....5006-5001

Options:

Analyst Director Software . . . . . 5005-1201  
 AC Adaptor, 90-240VAC . . . . . 0070-1215  
 Serial Cable . . . . . 5001-0202  
 Soft carrying case . . . . . 5001-1002



Optional Analyst Director Software

**AEA Technology**  
 AEA Technology, Inc.  
 1489 poinsettia Ave, Suite 134  
 Vista CA 92084  
 Ph: 800-258-7805 / 760-798-9687  
 FAX:760-798-9689  
[www.aeatechnology.com](http://www.aeatechnology.com)